



Opinions on the impact of alcohol on individuals and communities: early summary findings from the North West Big Drink Debate

Penny A. Cook, Karen Tocque, Michela Morleo, Mark A. Bellis

Appendix B: Analysis at local authority level

Tables

Table B1: Percentage of participants reporting alcohol consumption, by consumption level and local authority.

Table B2: Percentage of respondents agreeing that access and availability of alcohol increases alcohol use, by local authority.

Table B3: Percentage of respondents with concerns about alcohol use in the community, by local authority.

Figures

Figure B1.1: Percentage of non-drinkers, by local authority.

Figure B1.2: Percentage of sensible drinkers, by local authority.

Figure B1.3: Percentage of hazardous drinkers, by local authority.

Figure B1.4: Percentage of harmful drinkers, by local authority.

Figure B2.1: Percentage of people who think that serving large measures increases people's alcohol use, by local authority.

Figure B2.2: Percentage of people who think that strong (very alcoholic) drinks increase people's alcohol use, by local authority.

Figure B3.1: Percentage of people who claim to avoid town centres at night because of the drunken behaviour of others, by local authority.

Figure B3.2: Percentage of people who think that children drinking in the streets/parks is a concern, by local authority.

Figure B3.3: Percentage of people who think that the risk of alcohol-related fire is a concern, by local authority.

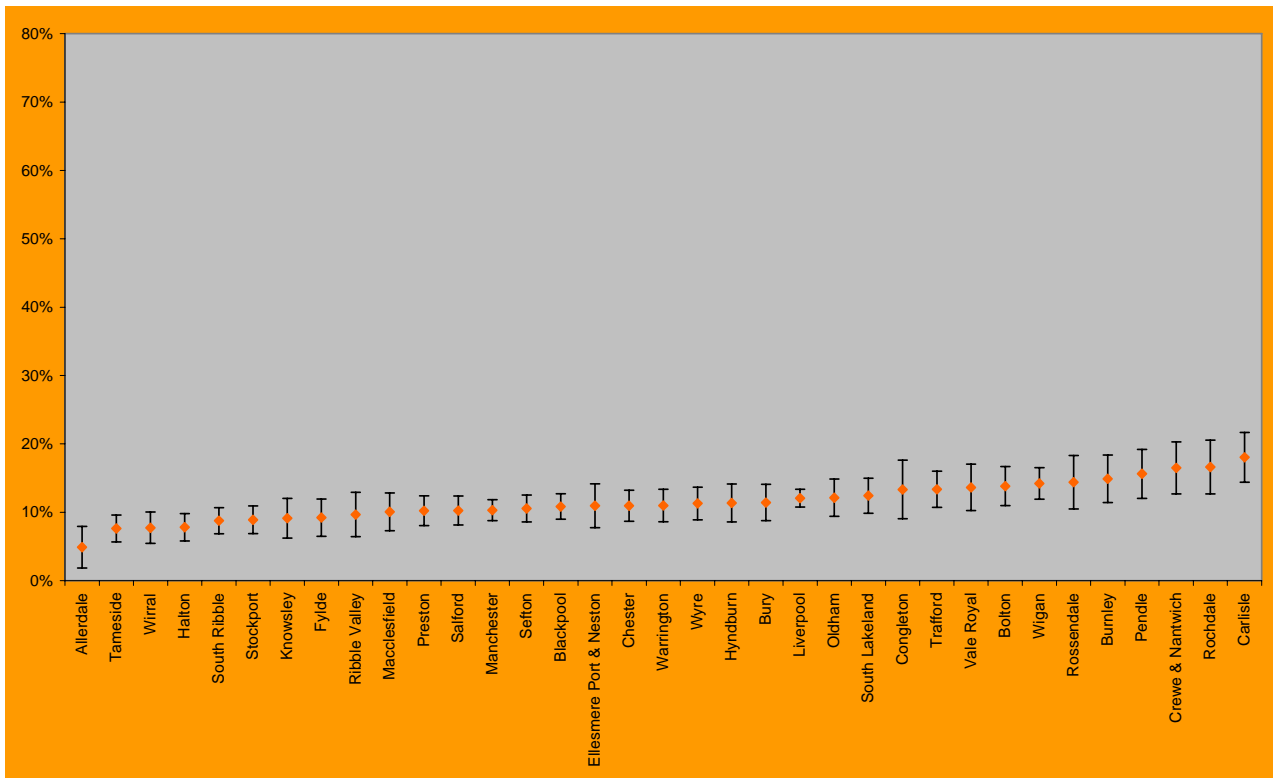
Table B1: Percentage of participants reporting alcohol consumption, by consumption level and local authority.

| Local authority | N | Non drinkers | | | Sensible drinkers | | |
|-------------------------|---------------|--------------|-------------|-------------|-------------------|-------------|-------------|
| | | % | LCL | UCL | % | LCL | UCL |
| Allerdale | 196 | 4.9 | 1.9 | 8.0 | 65.7 | 59.0 | 72.4 |
| Blackpool | 1,098 | 10.9 | 9.0 | 12.7 | 64.3 | 61.4 | 67.1 |
| Bolton | 569 | 13.8 | 11.0 | 16.7 | 50.7 | 46.6 | 54.8 |
| Burnley | 405 | 14.9 | 11.4 | 18.4 | 60.2 | 55.4 | 65.0 |
| Bury | 552 | 11.4 | 8.8 | 14.1 | 62.7 | 58.6 | 66.7 |
| Carlisle | 437 | 18.1 | 14.4 | 21.7 | 60.8 | 56.2 | 65.4 |
| Chester | 725 | 11.0 | 8.7 | 13.3 | 63.5 | 60.0 | 67.0 |
| Congleton | 244 | 13.3 | 9.1 | 17.6 | 68.9 | 63.0 | 74.7 |
| Crewe & Nantwich | 369 | 16.5 | 12.7 | 20.3 | 65.7 | 60.9 | 70.6 |
| Ellesmere Port & Neston | 371 | 11.0 | 7.8 | 14.2 | 61.4 | 56.4 | 66.4 |
| Fylde | 438 | 9.2 | 6.5 | 11.9 | 63.3 | 58.8 | 67.8 |
| Halton | 701 | 7.8 | 5.8 | 9.8 | 63.6 | 60.1 | 67.2 |
| Hyndburn | 512 | 11.4 | 8.6 | 14.1 | 58.6 | 54.3 | 62.9 |
| Knowsley | 380 | 9.1 | 6.2 | 12.1 | 69.5 | 64.9 | 74.2 |
| Liverpool | 2,402 | 12.1 | 10.8 | 13.4 | 60.4 | 58.4 | 62.3 |
| Macclesfield | 457 | 10.1 | 7.3 | 12.9 | 62.7 | 58.2 | 67.1 |
| Manchester | 1,495 | 10.3 | 8.8 | 11.8 | 55.1 | 52.5 | 57.6 |
| Oldham | 557 | 12.1 | 9.4 | 14.9 | 60.5 | 56.5 | 64.6 |
| Pendle | 397 | 15.6 | 12.0 | 19.2 | 58.5 | 53.6 | 63.4 |
| Preston | 753 | 10.2 | 8.1 | 12.4 | 65.6 | 62.3 | 69.0 |
| Ribble Valley | 321 | 9.7 | 6.4 | 12.9 | 61.9 | 56.6 | 67.3 |
| Rochdale | 349 | 16.6 | 12.7 | 20.6 | 51.8 | 46.6 | 57.1 |
| Rossendale | 314 | 14.4 | 10.5 | 18.3 | 61.0 | 55.5 | 66.4 |
| Salford | 802 | 10.3 | 8.2 | 12.4 | 60.0 | 56.6 | 63.3 |
| Sefton | 942 | 10.6 | 8.6 | 12.5 | 63.8 | 60.8 | 66.9 |
| South Lakeland | 638 | 12.4 | 9.9 | 15.0 | 63.8 | 60.1 | 67.6 |
| South Ribble | 842 | 8.8 | 6.9 | 10.7 | 67.1 | 63.9 | 70.3 |
| Stockport | 762 | 8.9 | 6.9 | 10.9 | 61.8 | 58.3 | 65.2 |
| Tameside | 703 | 7.6 | 5.7 | 9.6 | 62.2 | 58.6 | 65.8 |
| Trafford | 641 | 13.4 | 10.7 | 16.0 | 58.2 | 54.4 | 62.0 |
| Vale Royal | 398 | 13.7 | 10.3 | 17.0 | 63.2 | 58.5 | 68.0 |
| Warrington | 680 | 11.0 | 8.6 | 13.4 | 63.4 | 59.7 | 67.0 |
| Wigan | 891 | 14.2 | 11.9 | 16.5 | 60.3 | 57.0 | 63.5 |
| Wirral | 518 | 7.7 | 5.4 | 10.0 | 63.1 | 58.9 | 67.3 |
| Wyre | 677 | 11.3 | 8.9 | 13.7 | 64.2 | 60.6 | 67.9 |
| Cheshire | 3,905 | 11.4 | 10.4 | 12.4 | 64.1 | 62.6 | 65.7 |
| Cumbria | 1,555 | 11.4 | 9.8 | 13.0 | 63.9 | 61.6 | 66.3 |
| Greater Manchester | 7,351 | 11.2 | 10.5 | 11.9 | 58.8 | 57.7 | 59.9 |
| Lancashire | 6,826 | 10.9 | 10.2 | 11.7 | 62.7 | 61.6 | 63.8 |
| Merseyside | 4,545 | 11.3 | 10.4 | 12.3 | 62.2 | 60.8 | 63.6 |
| North West | 24,181 | 11.2 | 10.8 | 11.6 | 61.7 | 61.1 | 62.3 |

Non drinkers answered 'never' to the question 'in general, how often do you drink'. Sensible drinkers drank at or under the recognised sensible level in the previous week (21 units for males, 14 units for females). Hazardous drinkers drank above the recognised sensible levels in the previous week (between 22 and 55 units for males, 15 to 35 units for females). Harmful drinkers drank at a level that is recognised to cause harm (over 50 units for males, over 35 units for females). Totals by local authority do not add to the North West total because of missing geographical information. In addition, the North West total shown here only includes those with a postcode sufficient to be allocated to a North West county. Therefore, the numbers shown here differ from those in the summary report and in Appendix A.

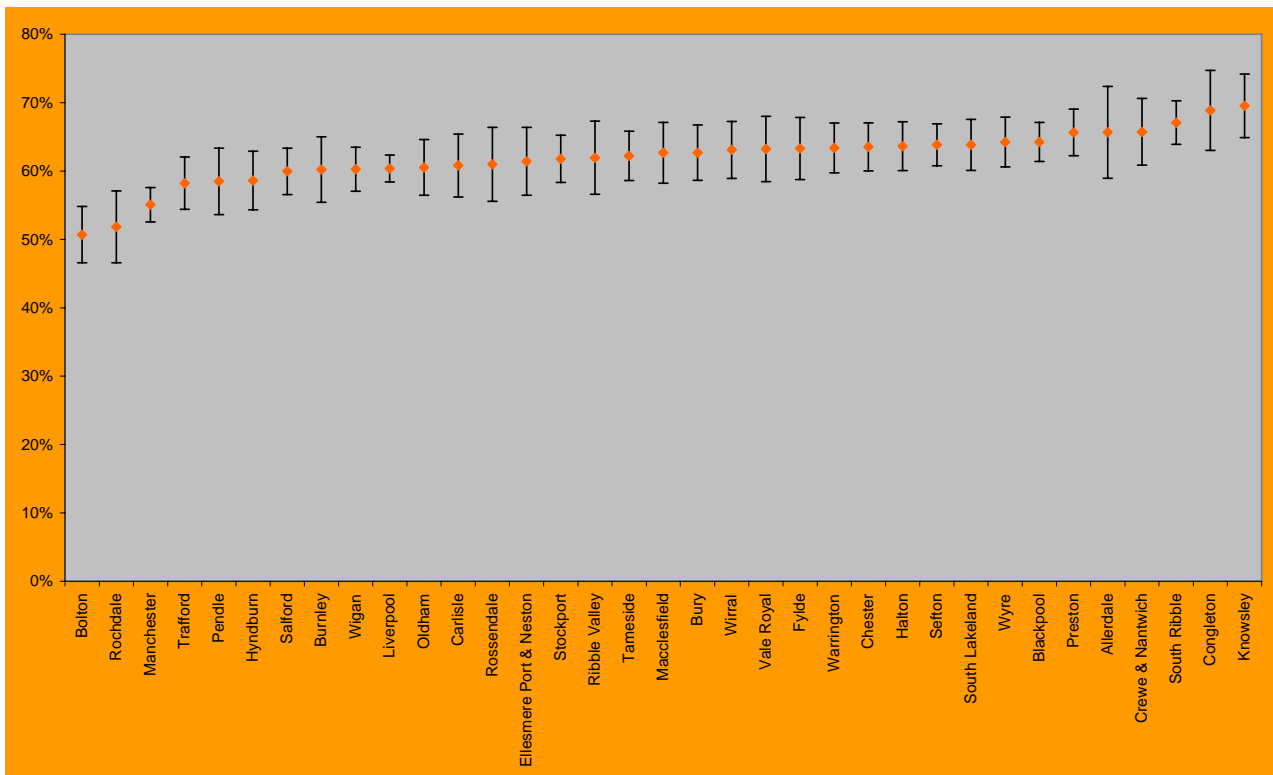
| Hazardous drinkers | | | Harmful drinkers | | | Local authority |
|--------------------|-------------|-------------|------------------|------------|------------|-------------------------|
| % | LCL | UCL | % | LCL | UCL | |
| 26.0 | 19.8 | 32.2 | 3.5 | 0.9 | 6.0 | Allerdale |
| 17.9 | 15.7 | 20.2 | 6.5 | 5.0 | 8.0 | Blackpool |
| 27.2 | 23.6 | 30.9 | 8.3 | 6.0 | 10.5 | Bolton |
| 15.3 | 11.7 | 18.8 | 9.6 | 6.8 | 12.5 | Burnley |
| 19.8 | 16.5 | 23.2 | 5.7 | 3.8 | 7.7 | Bury |
| 16.0 | 12.6 | 19.5 | 4.9 | 2.9 | 6.9 | Carlisle |
| 18.7 | 15.8 | 21.5 | 6.1 | 4.4 | 7.9 | Chester |
| 15.1 | 10.6 | 19.7 | 2.7 | 0.6 | 4.7 | Congleton |
| 14.7 | 11.1 | 18.3 | 3.1 | 1.3 | 4.8 | Crewe & Nantwich |
| 21.4 | 17.2 | 25.6 | 5.8 | 3.4 | 8.1 | Ellesmere Port & Neston |
| 21.0 | 17.1 | 24.8 | 6.0 | 3.7 | 8.2 | Fylde |
| 23.5 | 20.4 | 26.7 | 4.9 | 3.3 | 6.5 | Halton |
| 19.3 | 15.9 | 22.7 | 8.2 | 5.8 | 10.6 | Hyndburn |
| 15.2 | 11.5 | 18.8 | 6.2 | 3.7 | 8.6 | Knowsley |
| 20.8 | 19.2 | 22.4 | 6.7 | 5.7 | 7.7 | Liverpool |
| 20.0 | 16.3 | 23.7 | 6.0 | 3.8 | 8.2 | Macclesfield |
| 24.9 | 22.7 | 27.1 | 9.4 | 7.9 | 10.9 | Manchester |
| 18.8 | 15.5 | 22.1 | 8.5 | 6.2 | 10.9 | Oldham |
| 18.2 | 14.4 | 22.0 | 7.2 | 4.7 | 9.8 | Pendle |
| 18.7 | 16.0 | 21.5 | 5.3 | 3.7 | 6.9 | Preston |
| 21.6 | 17.1 | 26.1 | 6.8 | 4.0 | 9.5 | Ribble Valley |
| 25.6 | 21.0 | 30.3 | 5.9 | 3.4 | 8.4 | Rochdale |
| 17.5 | 13.3 | 21.7 | 7.1 | 4.3 | 10.0 | Rossendale |
| 22.8 | 19.9 | 25.7 | 7.0 | 5.2 | 8.8 | Salford |
| 19.7 | 17.2 | 22.3 | 5.0 | 3.6 | 6.4 | Sefton |
| 18.4 | 15.4 | 21.4 | 5.1 | 3.4 | 6.8 | South Lakeland |
| 19.0 | 16.4 | 21.7 | 5.1 | 3.7 | 6.6 | South Ribble |
| 22.9 | 19.9 | 25.9 | 6.3 | 4.6 | 8.0 | Stockport |
| 21.3 | 18.3 | 24.4 | 8.7 | 6.6 | 10.7 | Tameside |
| 22.3 | 19.1 | 25.5 | 6.1 | 4.3 | 8.0 | Trafford |
| 18.5 | 14.7 | 22.4 | 4.5 | 2.4 | 6.5 | Vale Royal |
| 17.8 | 14.9 | 20.7 | 7.4 | 5.4 | 9.4 | Warrington |
| 19.6 | 17.0 | 22.2 | 5.9 | 4.4 | 7.5 | Wigan |
| 23.2 | 19.5 | 26.8 | 6.0 | 4.0 | 8.1 | Wirral |
| 17.7 | 14.8 | 20.6 | 6.2 | 4.4 | 8.0 | Wyre |
| 18.7 | 17.4 | 19.9 | 5.3 | 4.6 | 6.0 | Cheshire |
| 19.6 | 17.6 | 21.6 | 4.8 | 3.8 | 5.9 | Cumbria |
| 22.4 | 21.5 | 23.4 | 7.5 | 6.9 | 8.1 | Greater Manchester |
| 19.7 | 18.8 | 20.6 | 6.3 | 5.7 | 6.9 | Lancashire |
| 19.9 | 18.7 | 21.0 | 6.3 | 5.6 | 7.0 | Merseyside |
| 20.4 | 19.9 | 20.9 | 6.4 | 6.1 | 6.7 | North West |

Figure B1.1: Percentage of non-drinkers, by local authority.



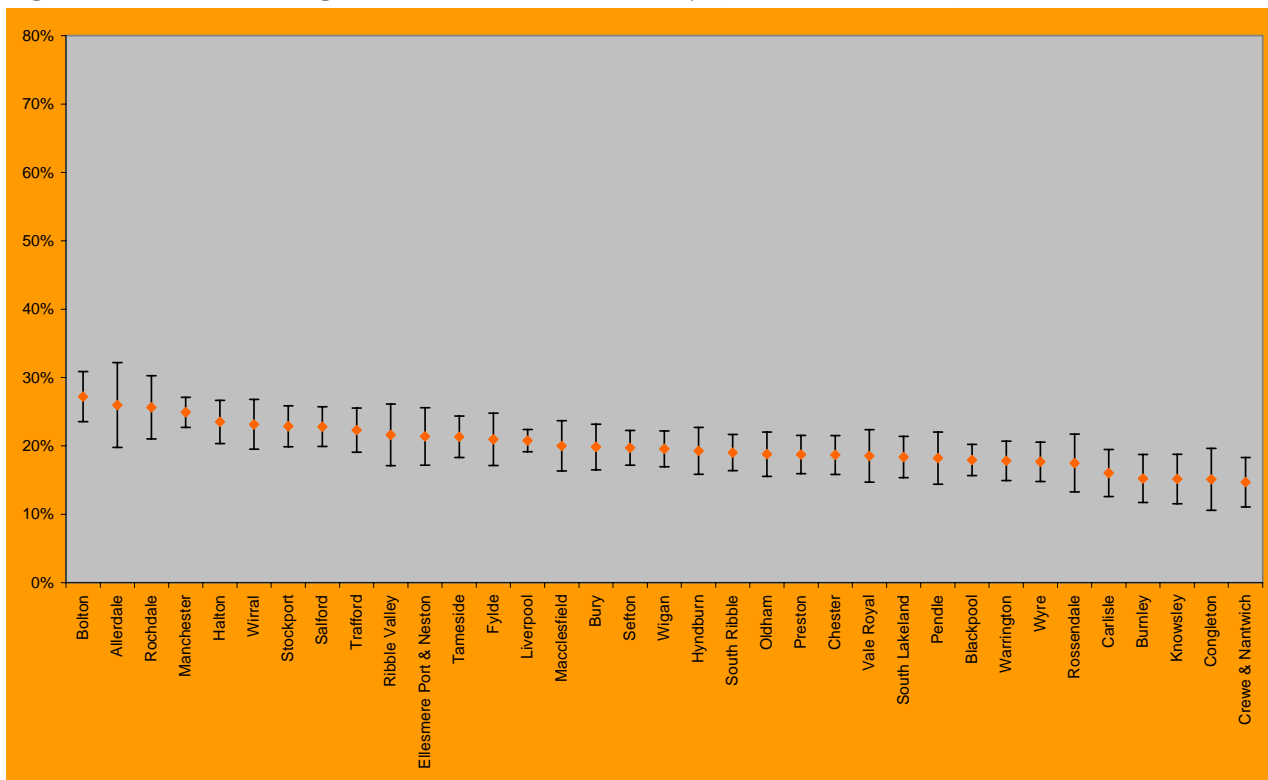
Non drinkers answered 'never' to the question 'in general, how often do you drink'. Local authorities are ordered by level of potential harm, with those most likely to be experiencing harm furthest to the left.

Figure B1.2: Percentage of sensible drinkers, by local authority.



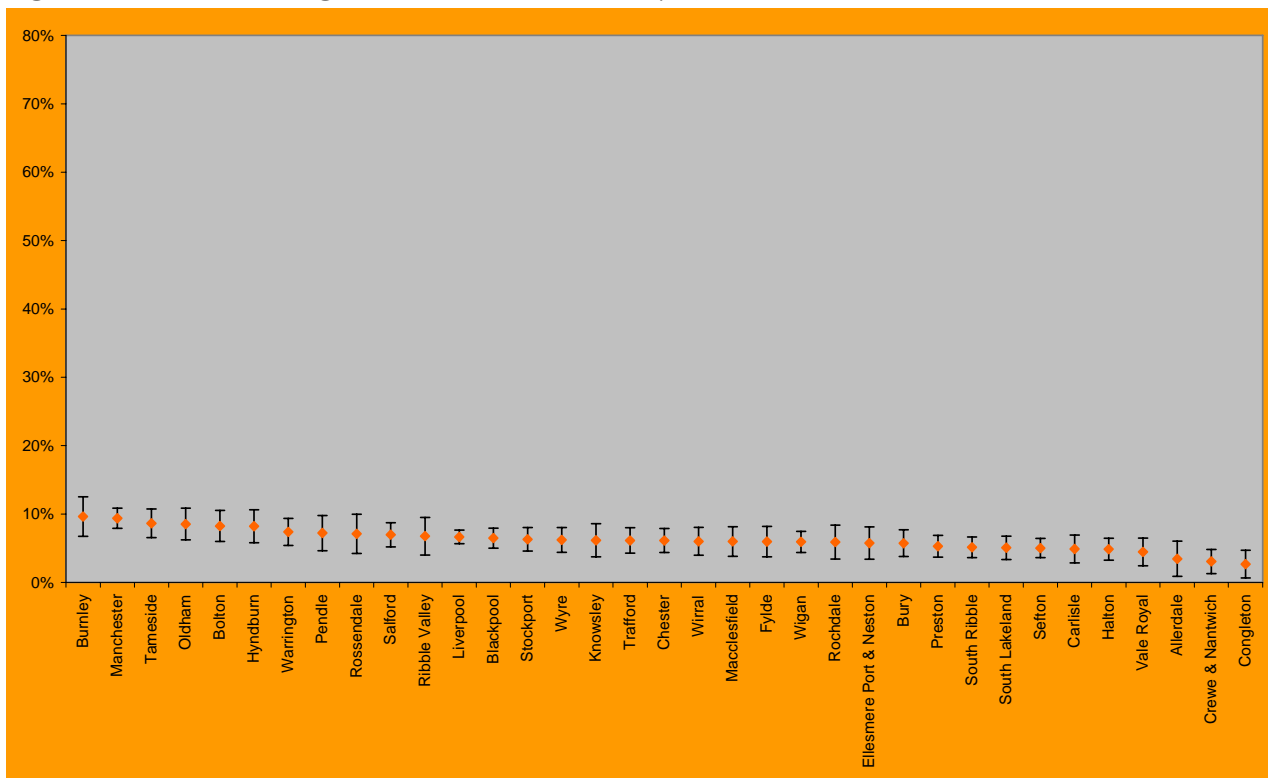
Sensible drinkers drank at or under the recognised sensible level in the previous week (21 units for males, 14 units for females). Local authorities are ordered by level of potential harm, with those most likely to be experiencing harm furthest to the left.

Figure B1.3: Percentage of hazardous drinkers, by local authority.



Hazardous drinkers drink above the recognised sensible levels in the previous week (between 22 and 55 units for males, 15 to 35 units for females). Local authorities are ordered by level of potential harm, with those most likely to be experiencing harm furthest to the left.

Figure B1.4: Percentage of harmful drinkers, by local authority.



Harmful drinkers drank at a level that is recognised to cause harm (over 50 units for males, over 35 units for females). Local authorities are ordered by level of potential harm, with those most likely to be experiencing harm furthest to the left.

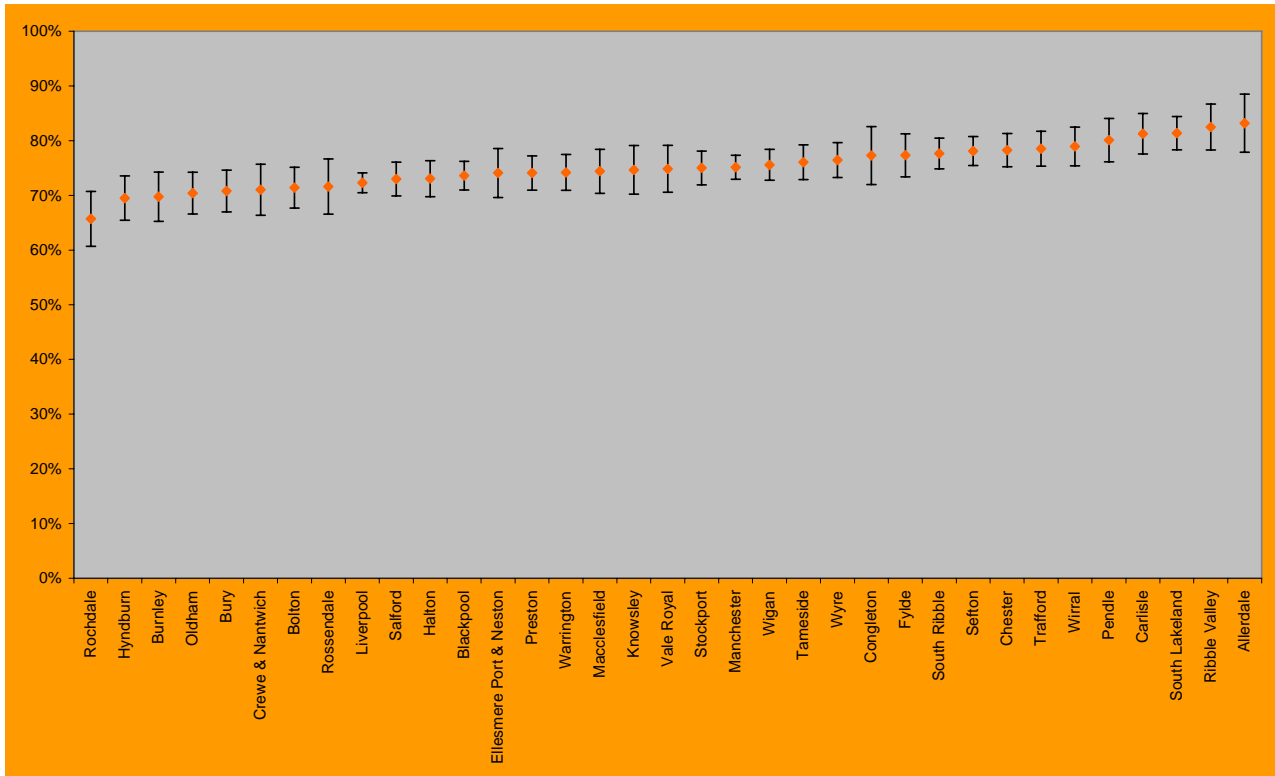
Table B2: Percentage of respondents agreeing that access and availability of alcohol increases alcohol use, by local authority.

| Local authority | N | Serving large measures increases people's | | | Low prices and discounts increase people's | | | Strong (very alcoholic) drinks increase people's | | |
|-------------------------|---------------|---|-------------|-------------|--|-------------|-------------|--|-------------|-------------|
| | | % | LCL | UCL | % | LCL | UCL | % | LCL | UCL |
| Allerdale | 194 | 83.2 | 77.9 | 88.5 | 83.8 | 78.5 | 89.0 | 56.6 | 49.6 | 63.7 |
| Blackpool | 1,094 | 73.6 | 71.0 | 76.2 | 79.1 | 76.7 | 81.5 | 48.4 | 45.4 | 51.4 |
| Bolton | 569 | 71.4 | 67.7 | 75.1 | 79.3 | 75.9 | 82.6 | 48.1 | 43.9 | 52.2 |
| Burnley | 403 | 69.8 | 65.3 | 74.3 | 78.0 | 74.0 | 82.1 | 45.7 | 40.8 | 50.6 |
| Bury | 549 | 70.8 | 67.0 | 74.6 | 80.2 | 76.9 | 83.6 | 45.4 | 41.2 | 49.6 |
| Carlisle | 432 | 81.2 | 77.6 | 84.9 | 80.1 | 76.3 | 83.9 | 50.6 | 45.8 | 55.3 |
| Chester | 715 | 78.3 | 75.2 | 81.3 | 79.0 | 76.0 | 82.0 | 53.6 | 50.0 | 57.3 |
| Congleton | 244 | 77.3 | 72.0 | 82.6 | 79.9 | 74.8 | 85.0 | 47.2 | 40.9 | 53.5 |
| Crewe & Nantwich | 368 | 71.0 | 66.4 | 75.7 | 79.2 | 75.0 | 83.3 | 43.8 | 38.7 | 48.9 |
| Ellesmere Port & Neston | 369 | 74.1 | 69.6 | 78.6 | 77.9 | 73.6 | 82.1 | 42.7 | 37.7 | 47.8 |
| Fylde | 435 | 77.3 | 73.4 | 81.3 | 83.0 | 79.5 | 86.5 | 45.2 | 40.5 | 49.8 |
| Halton | 701 | 73.1 | 69.8 | 76.3 | 76.8 | 73.6 | 79.9 | 46.4 | 42.7 | 50.1 |
| Hyndburn | 497 | 69.5 | 65.4 | 73.6 | 75.5 | 71.7 | 79.3 | 44.6 | 40.2 | 49.0 |
| Knowsley | 373 | 74.7 | 70.2 | 79.1 | 77.6 | 73.4 | 81.9 | 52.9 | 47.8 | 58.0 |
| Liverpool | 2,365 | 72.3 | 70.5 | 74.1 | 80.6 | 79.0 | 82.2 | 48.3 | 46.3 | 50.3 |
| Macclesfield | 453 | 74.4 | 70.4 | 78.4 | 77.0 | 73.1 | 80.9 | 51.8 | 47.1 | 56.4 |
| Manchester | 1,483 | 75.1 | 72.9 | 77.3 | 80.4 | 78.3 | 82.4 | 50.3 | 47.8 | 52.9 |
| Oldham | 554 | 70.4 | 66.6 | 74.2 | 77.2 | 73.6 | 80.7 | 48.1 | 44.0 | 52.3 |
| Pendle | 397 | 80.1 | 76.2 | 84.1 | 79.7 | 75.8 | 83.7 | 51.3 | 46.4 | 56.2 |
| Preston | 749 | 74.1 | 71.0 | 77.2 | 78.7 | 75.8 | 81.6 | 46.4 | 42.9 | 50.0 |
| Ribble Valley | 319 | 82.5 | 78.3 | 86.7 | 82.1 | 77.9 | 86.3 | 51.9 | 46.4 | 57.4 |
| Rochdale | 348 | 65.7 | 60.7 | 70.7 | 84.7 | 80.9 | 88.5 | 48.0 | 42.8 | 53.3 |
| Rossendale | 311 | 71.6 | 66.5 | 76.6 | 78.2 | 73.6 | 82.8 | 38.7 | 33.2 | 44.1 |
| Salford | 801 | 73.0 | 69.9 | 76.1 | 80.4 | 77.6 | 83.2 | 48.2 | 44.7 | 51.6 |
| Sefton | 940 | 78.1 | 75.5 | 80.8 | 81.8 | 79.4 | 84.3 | 52.3 | 49.1 | 55.5 |
| South Lakeland | 637 | 81.4 | 78.3 | 84.4 | 84.4 | 81.6 | 87.2 | 55.1 | 51.2 | 59.0 |
| South Ribble | 839 | 77.6 | 74.8 | 80.5 | 80.4 | 77.7 | 83.1 | 50.1 | 46.7 | 53.5 |
| Stockport | 754 | 75.0 | 71.9 | 78.1 | 82.8 | 80.1 | 85.5 | 50.8 | 47.2 | 54.4 |
| Tameside | 697 | 76.1 | 72.9 | 79.2 | 74.8 | 71.6 | 78.0 | 50.0 | 46.2 | 53.7 |
| Trafford | 639 | 78.5 | 75.3 | 81.7 | 81.5 | 78.5 | 84.5 | 53.7 | 49.8 | 57.6 |
| Vale Royal | 398 | 74.9 | 70.6 | 79.1 | 82.7 | 78.9 | 86.4 | 50.1 | 45.2 | 55.0 |
| Warrington | 679 | 74.2 | 70.9 | 77.5 | 80.5 | 77.5 | 83.5 | 51.0 | 47.3 | 54.8 |
| Wigan | 891 | 75.6 | 72.8 | 78.4 | 80.8 | 78.2 | 83.4 | 49.4 | 46.1 | 52.7 |
| Wirral | 509 | 79.0 | 75.4 | 82.5 | 79.3 | 75.7 | 82.8 | 52.6 | 48.2 | 56.9 |
| Wyre | 675 | 76.5 | 73.2 | 79.7 | 84.0 | 81.3 | 86.8 | 47.8 | 44.0 | 51.5 |
| Cheshire | 3,888 | 74.7 | 73.3 | 76.1 | 79.4 | 78.2 | 80.7 | 48.7 | 47.2 | 50.3 |
| Cumbria | 1,547 | 80.8 | 78.8 | 82.7 | 84.2 | 82.4 | 86.0 | 52.3 | 49.8 | 54.8 |
| Greater Manchester | 7,316 | 74.1 | 73.1 | 75.1 | 80.1 | 79.2 | 81.0 | 49.4 | 48.2 | 50.5 |
| Lancashire | 6,782 | 75.3 | 74.3 | 76.4 | 80.5 | 79.5 | 81.4 | 47.5 | 46.4 | 48.7 |
| Merseyside | 4,488 | 74.9 | 73.6 | 76.2 | 80.9 | 79.8 | 82.1 | 50.5 | 49.0 | 52.0 |
| North West | 24,021 | 75.1 | 74.6 | 75.7 | 80.5 | 80.0 | 81.0 | 49.1 | 48.5 | 49.8 |

Totals by local authority do not add to the North West total because of missing geographical information. In addition, the North West total shown here only includes those with a postcode sufficient to be allocated to a North West county. Therefore, the numbers shown here differ from those in the summary report and in Appendix A.

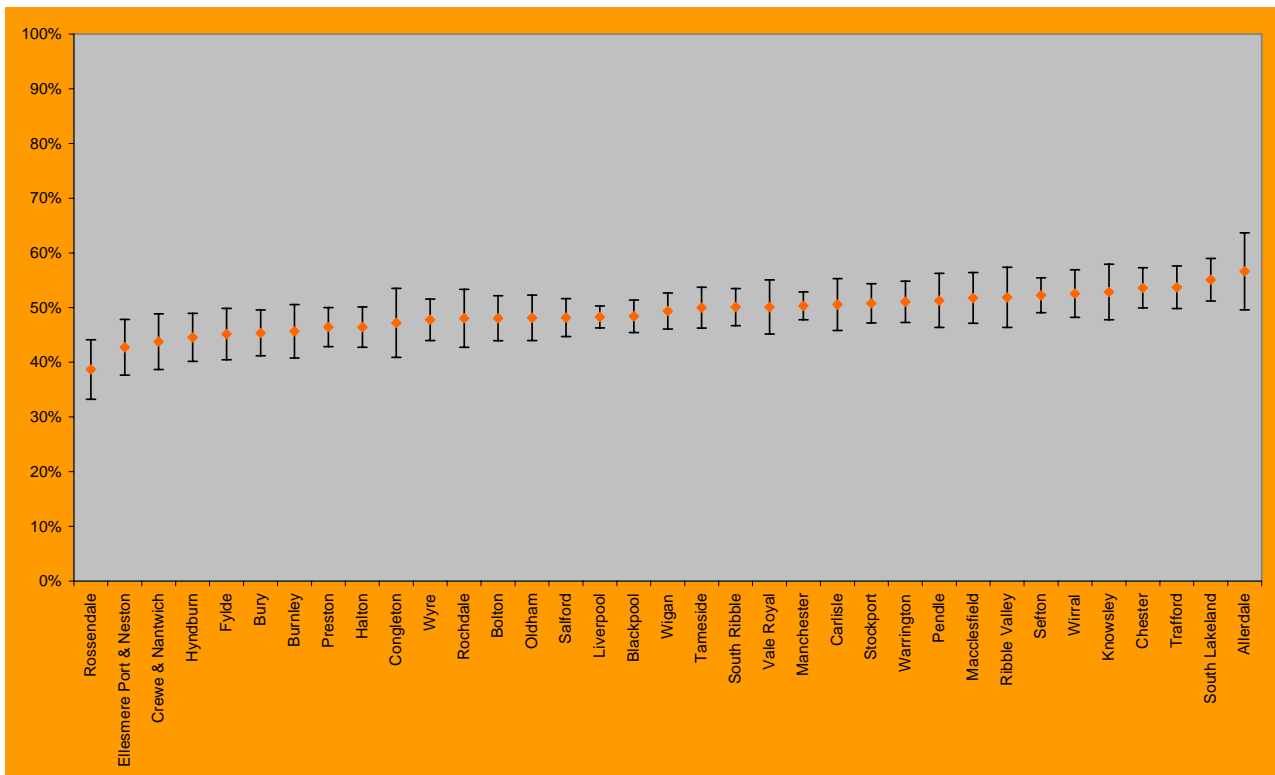
| Alcohol advertising increases people's alcohol use | | | Extending licensing hours increases people's alcohol use | | | Allowing street drinking increases people's alcohol use | | | Local authority |
|--|-------------|-------------|--|-------------|-------------|---|-------------|-------------|-------------------------|
| % | LCL | UCL | % | LCL | UCL | % | LCL | UCL | |
| 65.2 | 58.5 | 72.0 | 60.0 | 53.0 | 66.9 | 56.7 | 49.7 | 63.8 | Allerdale |
| 56.1 | 53.2 | 59.1 | 58.0 | 55.1 | 60.9 | 69.0 | 66.3 | 71.7 | Blackpool |
| 54.4 | 50.3 | 58.5 | 51.7 | 47.6 | 55.8 | 63.3 | 59.3 | 67.2 | Bolton |
| 53.7 | 48.9 | 58.6 | 57.6 | 52.7 | 62.4 | 67.6 | 63.0 | 72.2 | Burnley |
| 61.0 | 56.9 | 65.0 | 55.5 | 51.3 | 59.7 | 69.8 | 66.0 | 73.7 | Bury |
| 61.1 | 56.5 | 65.7 | 61.2 | 56.6 | 65.8 | 71.0 | 66.8 | 75.3 | Carlisle |
| 57.3 | 53.7 | 61.0 | 52.5 | 48.9 | 56.2 | 62.9 | 59.3 | 66.4 | Chester |
| 59.4 | 53.2 | 65.6 | 63.6 | 57.5 | 69.7 | 72.5 | 66.8 | 78.1 | Congleton |
| 53.6 | 48.5 | 58.8 | 53.1 | 48.0 | 58.2 | 59.7 | 54.6 | 64.7 | Crewe & Nantwich |
| 55.6 | 50.5 | 60.7 | 56.2 | 51.2 | 61.3 | 69.9 | 65.2 | 74.6 | Ellesmere Port & Neston |
| 58.0 | 53.4 | 62.7 | 56.3 | 51.6 | 60.9 | 74.2 | 70.1 | 78.3 | Fylde |
| 54.0 | 50.3 | 57.7 | 54.3 | 50.6 | 58.0 | 70.5 | 67.1 | 73.9 | Halton |
| 51.8 | 47.4 | 56.2 | 51.3 | 46.9 | 55.7 | 63.3 | 59.1 | 67.6 | Hyndburn |
| 61.9 | 56.9 | 66.8 | 58.8 | 53.7 | 63.8 | 69.4 | 64.7 | 74.1 | Knowsley |
| 59.2 | 57.2 | 61.2 | 54.0 | 52.0 | 56.0 | 66.3 | 64.4 | 68.2 | Liverpool |
| 58.1 | 53.5 | 62.6 | 54.6 | 50.0 | 59.2 | 69.2 | 64.9 | 73.5 | Macclesfield |
| 53.8 | 51.3 | 56.4 | 49.3 | 46.7 | 51.8 | 62.0 | 59.5 | 64.4 | Manchester |
| 52.3 | 48.1 | 56.5 | 56.5 | 52.4 | 60.7 | 72.0 | 68.2 | 75.7 | Oldham |
| 58.6 | 53.8 | 63.5 | 61.8 | 57.0 | 66.6 | 69.4 | 64.9 | 74.0 | Pendle |
| 59.7 | 56.1 | 63.2 | 54.8 | 51.2 | 58.4 | 69.7 | 66.4 | 73.0 | Preston |
| 64.7 | 59.5 | 70.0 | 56.5 | 51.1 | 62.0 | 71.5 | 66.6 | 76.5 | Ribble Valley |
| 56.2 | 51.0 | 61.5 | 50.5 | 45.3 | 55.8 | 70.9 | 66.2 | 75.7 | Rochdale |
| 52.7 | 47.1 | 58.3 | 47.5 | 41.9 | 53.0 | 63.7 | 58.3 | 69.1 | Rossendale |
| 57.2 | 53.8 | 60.6 | 53.2 | 49.8 | 56.7 | 69.9 | 66.7 | 73.0 | Salford |
| 64.9 | 61.8 | 67.9 | 57.4 | 54.2 | 60.5 | 71.8 | 68.9 | 74.7 | Sefton |
| 63.4 | 59.7 | 67.2 | 62.2 | 58.5 | 66.0 | 65.8 | 62.1 | 69.5 | South Lakeland |
| 57.1 | 53.7 | 60.4 | 55.8 | 52.4 | 59.2 | 71.9 | 68.9 | 75.0 | South Ribble |
| 63.1 | 59.6 | 66.5 | 54.4 | 50.9 | 58.0 | 72.1 | 68.8 | 75.3 | Stockport |
| 51.2 | 47.5 | 54.9 | 52.2 | 48.5 | 55.9 | 68.1 | 64.6 | 71.5 | Tameside |
| 59.6 | 55.8 | 63.4 | 55.7 | 51.8 | 59.5 | 71.8 | 68.3 | 75.3 | Trafford |
| 61.6 | 56.8 | 66.4 | 53.4 | 48.5 | 58.4 | 71.8 | 67.3 | 76.2 | Vale Royal |
| 57.7 | 54.0 | 61.5 | 54.5 | 50.8 | 58.3 | 70.1 | 66.6 | 73.5 | Warrington |
| 59.6 | 56.3 | 62.8 | 51.7 | 48.4 | 55.0 | 72.8 | 69.9 | 75.7 | Wigan |
| 59.6 | 55.3 | 63.9 | 63.2 | 59.0 | 67.4 | 76.8 | 73.1 | 80.4 | Wirral |
| 60.8 | 57.1 | 64.5 | 60.6 | 56.9 | 64.3 | 71.8 | 68.4 | 75.2 | Wyre |
| 57.4 | 55.8 | 59.0 | 54.7 | 53.1 | 56.3 | 68.0 | 66.6 | 69.5 | Cheshire |
| 62.1 | 59.7 | 64.5 | 59.6 | 57.1 | 62.0 | 64.7 | 62.3 | 67.1 | Cumbria |
| 56.6 | 55.4 | 57.7 | 53.0 | 51.9 | 54.2 | 68.5 | 67.4 | 69.5 | Greater Manchester |
| 57.6 | 56.4 | 58.7 | 56.0 | 54.8 | 57.2 | 69.3 | 68.2 | 70.4 | Lancashire |
| 60.6 | 59.2 | 62.0 | 56.4 | 55.0 | 57.9 | 69.6 | 68.2 | 70.9 | Merseyside |
| 58.1 | 57.5 | 58.7 | 55.2 | 54.6 | 55.8 | 68.6 | 68.0 | 69.2 | North West |

Figure B2.1: Percentage of people who think that serving large measures increases people's alcohol use, by local authority.



Local authorities are ordered by level of potential harm, with those most likely to be experiencing harm furthest to the left.

Figure B2.2: Percentage of people who think that strong (very alcoholic) drinks increase people's alcohol use, by local authority.



Local authorities are ordered by level of potential harm, with those most likely to be experiencing harm furthest to the left.

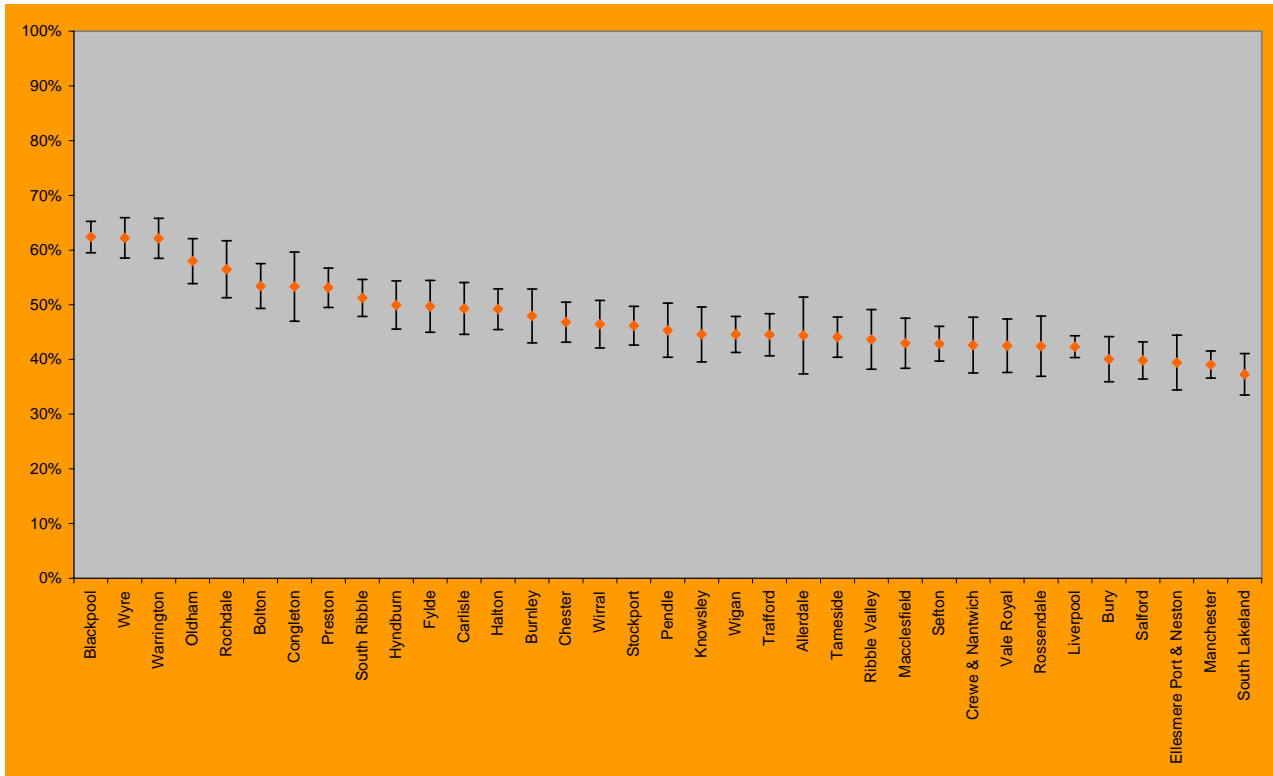
Table B3: Percentage of respondents with concerns about alcohol use in the community, by local authority.

| Local authority | N | Avoidance of town centres at night because of the drunken behaviour of others | | | Action is needed to tackle alcohol-related behaviour in local areas | | | The drunken behaviour of others is a concern | | |
|-------------------------|---------------|---|-------------|-------------|---|-------------|-------------|--|-------------|-------------|
| | | % | LCL | UCL | % | LCL | UCL | % | LCL | UCL |
| Allerdale | 196 | 44.4 | 37.4 | 51.4 | 66.6 | 60.0 | 73.3 | 81.3 | 75.8 | 86.8 |
| Blackpool | 1,095 | 62.4 | 59.5 | 65.3 | 63.1 | 60.3 | 66.0 | 75.7 | 73.2 | 78.3 |
| Bolton | 569 | 53.4 | 49.3 | 57.5 | 51.6 | 47.5 | 55.8 | 77.0 | 73.6 | 80.5 |
| Burnley | 404 | 48.0 | 43.1 | 52.9 | 55.2 | 50.3 | 60.0 | 66.1 | 61.4 | 70.8 |
| Bury | 552 | 40.1 | 36.0 | 44.2 | 50.3 | 46.1 | 54.5 | 71.8 | 68.0 | 75.6 |
| Carlisle | 435 | 49.3 | 44.6 | 54.0 | 55.0 | 50.3 | 59.7 | 76.0 | 72.0 | 80.1 |
| Chester | 720 | 46.8 | 43.2 | 50.5 | 42.0 | 38.3 | 45.6 | 67.4 | 64.0 | 70.8 |
| Congleton | 243 | 53.3 | 47.0 | 59.6 | 44.8 | 38.5 | 51.1 | 77.0 | 71.6 | 82.3 |
| Crewe & Nantwich | 369 | 42.6 | 37.6 | 47.7 | 50.9 | 45.7 | 56.0 | 66.5 | 61.7 | 71.4 |
| Ellesmere Port & Neston | 370 | 39.4 | 34.4 | 44.4 | 47.9 | 42.8 | 53.0 | 68.0 | 63.3 | 72.8 |
| Fylde | 430 | 49.7 | 45.0 | 54.4 | 46.8 | 42.1 | 51.6 | 78.3 | 74.4 | 82.2 |
| Halton | 700 | 49.2 | 45.5 | 52.9 | 51.4 | 47.7 | 55.1 | 75.6 | 72.4 | 78.8 |
| Hyndburn | 497 | 50.0 | 45.5 | 54.4 | 51.8 | 47.4 | 56.2 | 65.8 | 61.7 | 69.9 |
| Knowsley | 380 | 44.6 | 39.6 | 49.6 | 44.6 | 39.5 | 49.6 | 75.9 | 71.6 | 80.3 |
| Liverpool | 2,399 | 42.3 | 40.4 | 44.3 | 44.5 | 42.5 | 46.5 | 70.6 | 68.8 | 72.5 |
| Macclesfield | 453 | 43.0 | 38.4 | 47.6 | 49.5 | 44.8 | 54.1 | 71.6 | 67.4 | 75.7 |
| Manchester | 1,491 | 39.1 | 36.6 | 41.5 | 45.2 | 42.7 | 47.8 | 67.1 | 64.7 | 69.5 |
| Oldham | 556 | 58.0 | 53.9 | 62.1 | 52.8 | 48.7 | 57.0 | 73.8 | 70.1 | 77.4 |
| Pendle | 395 | 45.3 | 40.4 | 50.3 | 52.4 | 47.4 | 57.3 | 71.3 | 66.8 | 75.8 |
| Preston | 743 | 53.1 | 49.5 | 56.7 | 45.3 | 41.7 | 48.9 | 73.3 | 70.1 | 76.5 |
| Ribble Valley | 320 | 43.7 | 38.2 | 49.1 | 46.0 | 40.5 | 51.5 | 74.8 | 70.0 | 79.5 |
| Rochdale | 349 | 56.5 | 51.3 | 61.7 | 51.6 | 46.4 | 56.9 | 74.5 | 69.9 | 79.1 |
| Rossendale | 314 | 42.4 | 36.9 | 47.9 | 45.0 | 39.5 | 50.5 | 63.5 | 58.1 | 68.9 |
| Salford | 802 | 39.8 | 36.4 | 43.2 | 53.2 | 49.8 | 56.7 | 74.0 | 71.0 | 77.0 |
| Sefton | 937 | 42.9 | 39.7 | 46.1 | 50.3 | 47.1 | 53.5 | 72.9 | 70.1 | 75.8 |
| South Lakeland | 630 | 37.3 | 33.5 | 41.1 | 44.5 | 40.6 | 48.4 | 72.4 | 68.9 | 75.9 |
| South Ribble | 838 | 51.3 | 47.9 | 54.6 | 46.4 | 43.0 | 49.8 | 74.4 | 71.4 | 77.4 |
| Stockport | 762 | 46.2 | 42.6 | 49.7 | 49.0 | 45.5 | 52.6 | 73.0 | 69.9 | 76.2 |
| Tameside | 701 | 44.1 | 40.4 | 47.8 | 51.3 | 47.6 | 55.0 | 71.5 | 68.2 | 74.9 |
| Trafford | 640 | 44.5 | 40.7 | 48.4 | 48.2 | 44.3 | 52.1 | 73.7 | 70.2 | 77.1 |
| Vale Royal | 397 | 42.5 | 37.6 | 47.4 | 48.5 | 43.5 | 53.4 | 69.9 | 65.4 | 74.5 |
| Warrington | 680 | 62.1 | 58.5 | 65.8 | 63.1 | 59.5 | 66.7 | 78.5 | 75.4 | 81.6 |
| Wigan | 889 | 44.6 | 41.3 | 47.8 | 55.1 | 51.8 | 58.4 | 74.0 | 71.2 | 76.9 |
| Wirral | 512 | 46.4 | 42.1 | 50.8 | 49.5 | 45.1 | 53.8 | 75.5 | 71.8 | 79.3 |
| Wyre | 673 | 62.2 | 58.6 | 65.9 | 52.6 | 48.8 | 56.3 | 75.9 | 72.7 | 79.2 |
| Cheshire | 3,891 | 47.6 | 46.0 | 49.2 | 50.9 | 49.3 | 52.4 | 71.6 | 70.2 | 73.0 |
| Cumbria | 1,543 | 39.2 | 36.8 | 41.7 | 51.2 | 48.7 | 53.7 | 73.4 | 71.2 | 75.6 |
| Greater Manchester | 7,340 | 44.8 | 43.7 | 45.9 | 50.4 | 49.2 | 51.5 | 72.4 | 71.3 | 73.4 |
| Lancashire | 6,777 | 52.7 | 51.5 | 53.9 | 51.3 | 50.1 | 52.5 | 73.0 | 72.0 | 74.1 |
| Merseyside | 4,535 | 44.3 | 42.8 | 45.7 | 47.5 | 46.0 | 48.9 | 72.8 | 71.5 | 74.1 |
| North West | 24,085 | 47.0 | 46.4 | 47.6 | 50.2 | 49.6 | 50.9 | 72.6 | 72.0 | 73.1 |

Totals by local authority do not add to the North West total because of missing geographical information. In addition, the North West total shown here only includes those with a postcode sufficient to be allocated to a North West county. Therefore, the numbers shown here differ from those in the summary report and in Appendix A.

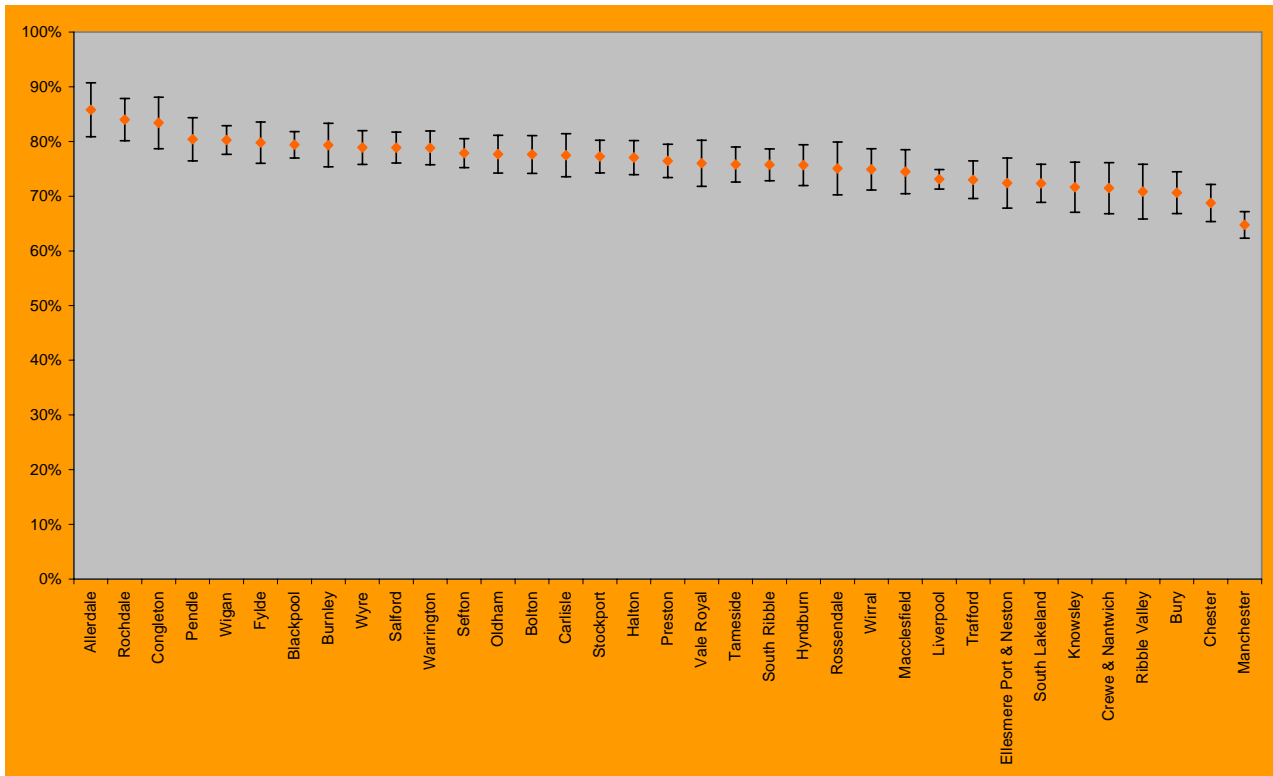
| Alcohol-related crime is a concern locally | | | Alcohol-related litter is a concern locally | | | Children drinking in the streets/parks is a concern | | | The risk of alcohol-related fire is a concern | | | Local authority |
|--|-------------|-------------|---|-------------|-------------|---|-------------|-------------|---|-------------|-------------|-------------------------|
| % | LCL | UCL | % | LCL | UCL | % | LCL | UCL | % | LCL | UCL | |
| 58.2 | 51.2 | 65.2 | 57.4 | 50.4 | 64.4 | 85.8 | 80.9 | 90.7 | 25.2 | 19.1 | 31.4 | Allerdale |
| 61.9 | 59.0 | 64.8 | 51.3 | 48.3 | 54.2 | 79.4 | 77.0 | 81.8 | 20.9 | 18.5 | 23.3 | Blackpool |
| 59.6 | 55.5 | 63.6 | 49.4 | 45.2 | 53.5 | 77.6 | 74.2 | 81.1 | 24.3 | 20.8 | 27.9 | Bolton |
| 62.8 | 58.1 | 67.6 | 51.4 | 46.4 | 56.3 | 79.4 | 75.4 | 83.3 | 29.1 | 24.6 | 33.6 | Burnley |
| 52.2 | 48.0 | 56.4 | 47.9 | 43.7 | 52.1 | 70.6 | 66.8 | 74.5 | 13.9 | 11.0 | 16.8 | Bury |
| 62.3 | 57.7 | 66.9 | 56.6 | 51.9 | 61.2 | 77.5 | 73.6 | 81.4 | 32.9 | 28.4 | 37.3 | Carlisle |
| 49.1 | 45.4 | 52.7 | 43.4 | 39.8 | 47.0 | 68.7 | 65.4 | 72.1 | 16.3 | 13.6 | 19.0 | Chester |
| 50.0 | 43.7 | 56.4 | 51.8 | 45.5 | 58.2 | 83.4 | 78.7 | 88.1 | 17.0 | 12.2 | 21.7 | Congleton |
| 50.1 | 44.9 | 55.3 | 43.9 | 38.8 | 49.0 | 71.5 | 66.8 | 76.2 | 17.6 | 13.6 | 21.5 | Crewe & Nantwich |
| 53.6 | 48.5 | 58.7 | 41.8 | 36.8 | 46.9 | 72.4 | 67.8 | 77.0 | 19.1 | 15.1 | 23.2 | Ellesmere Port & Neston |
| 56.0 | 51.3 | 60.7 | 48.7 | 44.0 | 53.5 | 79.8 | 76.0 | 83.6 | 17.4 | 13.8 | 21.0 | Fylde |
| 59.3 | 55.7 | 63.0 | 48.9 | 45.2 | 52.6 | 77.1 | 74.0 | 80.2 | 21.7 | 18.6 | 24.8 | Halton |
| 57.5 | 53.2 | 61.8 | 42.5 | 38.2 | 46.8 | 75.7 | 71.9 | 79.4 | 25.3 | 21.5 | 29.1 | Hyndburn |
| 58.3 | 53.3 | 63.3 | 45.4 | 40.4 | 50.5 | 71.6 | 67.1 | 76.2 | 21.9 | 17.7 | 26.1 | Knowsley |
| 54.5 | 52.5 | 56.5 | 45.5 | 43.5 | 47.5 | 73.1 | 71.3 | 74.9 | 19.6 | 18.0 | 21.2 | Liverpool |
| 56.0 | 51.4 | 60.6 | 46.1 | 41.5 | 50.7 | 74.5 | 70.5 | 78.5 | 16.5 | 13.1 | 19.9 | Macclesfield |
| 54.9 | 52.4 | 57.4 | 47.0 | 44.4 | 49.5 | 64.8 | 62.3 | 67.2 | 16.3 | 14.4 | 18.1 | Manchester |
| 58.1 | 53.9 | 62.2 | 52.3 | 48.1 | 56.4 | 77.7 | 74.2 | 81.2 | 23.0 | 19.5 | 26.5 | Oldham |
| 58.6 | 53.7 | 63.5 | 49.7 | 44.8 | 54.7 | 80.4 | 76.5 | 84.4 | 25.3 | 20.9 | 29.6 | Pendle |
| 57.7 | 54.1 | 61.2 | 50.3 | 46.7 | 53.9 | 76.5 | 73.4 | 79.5 | 15.9 | 13.3 | 18.6 | Preston |
| 49.2 | 43.7 | 54.8 | 47.4 | 41.9 | 52.9 | 70.8 | 65.8 | 75.8 | 15.7 | 11.7 | 19.8 | Ribble Valley |
| 63.8 | 58.8 | 68.9 | 60.4 | 55.2 | 65.6 | 84.0 | 80.1 | 87.9 | 16.7 | 12.8 | 20.7 | Rochdale |
| 53.0 | 47.4 | 58.6 | 40.8 | 35.3 | 46.4 | 75.1 | 70.2 | 79.9 | 19.8 | 15.3 | 24.2 | Rossendale |
| 61.1 | 57.7 | 64.5 | 52.0 | 48.5 | 55.5 | 78.9 | 76.1 | 81.7 | 18.6 | 15.9 | 21.3 | Salford |
| 56.9 | 53.7 | 60.1 | 48.4 | 45.2 | 51.6 | 77.9 | 75.2 | 80.5 | 18.1 | 15.6 | 20.5 | Sefton |
| 42.2 | 38.4 | 46.1 | 51.1 | 47.2 | 55.0 | 72.3 | 68.9 | 75.8 | 15.9 | 13.1 | 18.8 | South Lakeland |
| 54.0 | 50.6 | 57.4 | 50.8 | 47.4 | 54.2 | 75.8 | 72.9 | 78.7 | 14.1 | 11.7 | 16.4 | South Ribble |
| 56.9 | 53.4 | 60.5 | 51.0 | 47.4 | 54.6 | 77.2 | 74.3 | 80.2 | 14.4 | 11.9 | 16.9 | Stockport |
| 59.6 | 56.0 | 63.3 | 48.6 | 44.8 | 52.3 | 75.8 | 72.6 | 79.0 | 22.2 | 19.0 | 25.3 | Tameside |
| 58.9 | 55.1 | 62.7 | 51.1 | 47.2 | 55.0 | 73.0 | 69.5 | 76.4 | 20.2 | 17.1 | 23.3 | Trafford |
| 56.5 | 51.6 | 61.4 | 47.1 | 42.1 | 52.0 | 76.0 | 71.8 | 80.2 | 11.2 | 8.1 | 14.3 | Vale Royal |
| 65.4 | 61.9 | 69.0 | 49.7 | 45.9 | 53.5 | 78.8 | 75.8 | 81.9 | 14.8 | 12.1 | 17.4 | Warrington |
| 56.6 | 53.3 | 59.9 | 51.5 | 48.2 | 54.8 | 80.3 | 77.6 | 82.9 | 16.8 | 14.4 | 19.3 | Wigan |
| 52.6 | 48.2 | 56.9 | 47.1 | 42.8 | 51.4 | 74.9 | 71.2 | 78.7 | 18.0 | 14.7 | 21.3 | Wirral |
| 55.3 | 51.5 | 59.0 | 48.3 | 44.5 | 52.1 | 78.9 | 75.8 | 82.0 | 14.4 | 11.7 | 17.1 | Wyre |
| 55.7 | 54.1 | 57.2 | 46.3 | 44.7 | 47.8 | 74.7 | 73.4 | 76.1 | 16.7 | 15.5 | 17.8 | Cheshire |
| 49.5 | 47.0 | 52.0 | 51.4 | 48.9 | 53.8 | 74.9 | 72.7 | 77.0 | 18.9 | 16.9 | 20.9 | Cumbria |
| 57.6 | 56.4 | 58.7 | 50.1 | 49.0 | 51.3 | 74.4 | 73.4 | 75.4 | 18.2 | 17.4 | 19.1 | Greater Manchester |
| 56.0 | 54.8 | 57.2 | 48.2 | 47.0 | 49.4 | 76.7 | 75.7 | 77.7 | 19.4 | 18.5 | 20.3 | Lancashire |
| 55.7 | 54.2 | 57.1 | 46.5 | 45.0 | 47.9 | 74.8 | 73.6 | 76.1 | 19.7 | 18.5 | 20.8 | Merseyside |
| 56.0 | 55.3 | 56.6 | 48.4 | 47.7 | 49.0 | 75.2 | 74.7 | 75.8 | 18.6 | 18.1 | 19.1 | North West |

Figure B3.1: Percentage of people who claim to avoid town centres at night because of the drunken behaviour of others, by local authority.



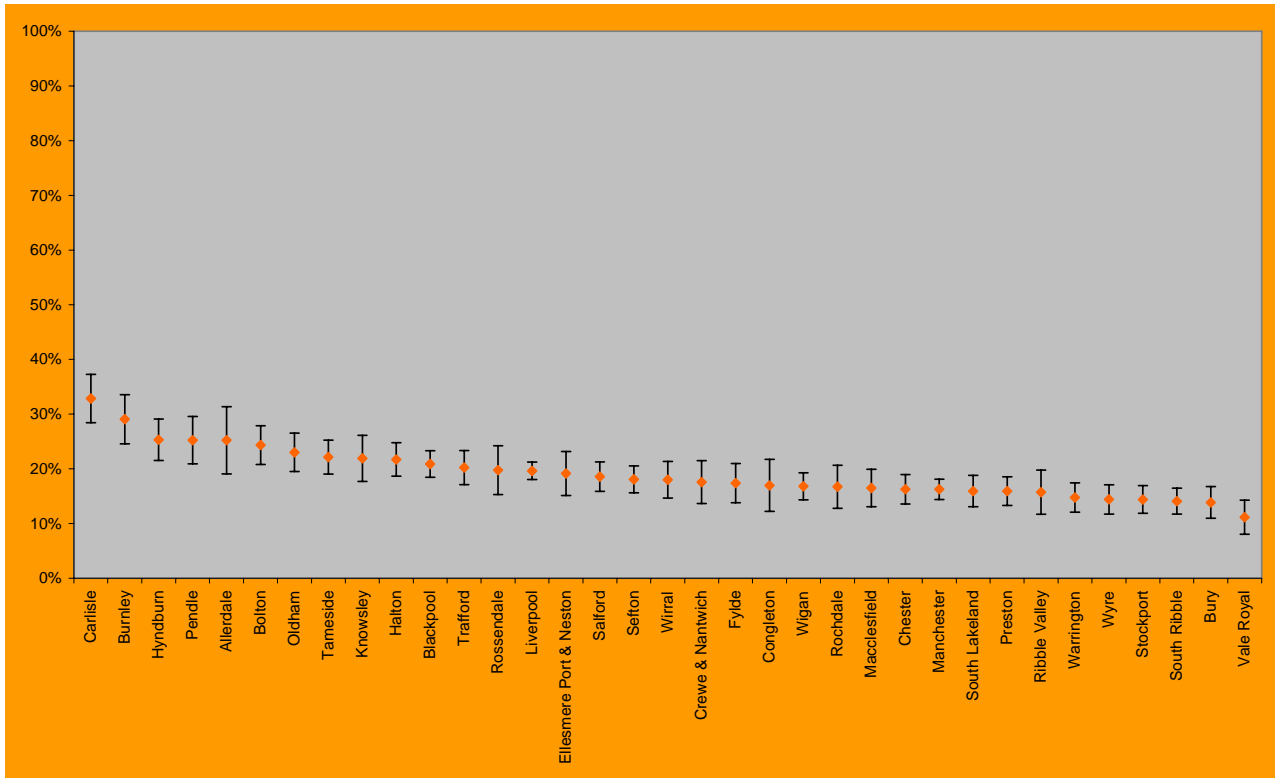
Local authorities are ordered by level of potential harm, with those most likely to be experiencing harm furthest to the left.

Figure B3.2: Percentage of people who think that children drinking in the streets/parks is a concern, by local authority.



Local authorities are ordered by level of potential harm, with those most likely to be experiencing harm furthest to the left.

Figure B3.3: Percentage of people who think that the risk of alcohol-related fire is a concern, by local authority.



Local authorities are ordered by level of potential harm, with those most likely to be experiencing harm furthest to the left.